



jordan fishwick

DIDSBURY
Parrs Wood Road



Parrs Wood Road, Didsbury, M20 5QT **Guide Price £230,000**



The Property

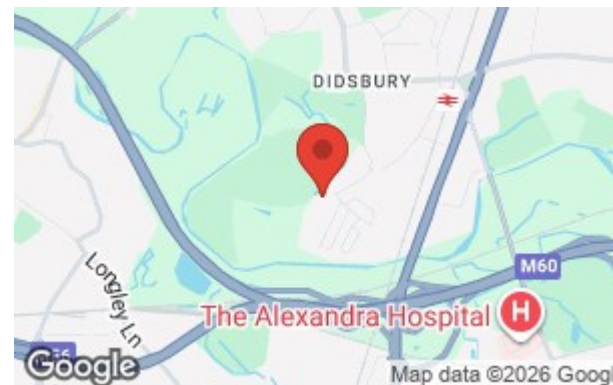
An appealing, TWO DOUBLE BEDROOM, top floor apartment with stylish living space throughout, forming part of a purpose built development with a quiet and convenient setting, backing onto woodland and being within easy reach of Didsbury Village and Fletcher Moss Gardens.

The accommodation benefits from uPVC double glazing and electric wall heaters, with numerous other noteworthy features including an impressive modern dining kitchen with a range of units and granite work surfaces, a light & airy living room, two excellent double bedrooms with ample space for freestanding furniture and a white bathroom suite with chrome fittings.

In addition, there is gated residents parking at the rear of the building.

Directions

M20 5QT



- Lovely top floor flat
- Two excellent double bedrooms
- Impressive modern dining kitchen
- Light & airy living room
- White bathroom & chrome fittings
- uPVC double glazing
- Electric radiators
- Gated residents parking
- Quiet location backing onto woodland
- Close to Didsbury Village

Postcode - M20 5QT

EPC Rating -

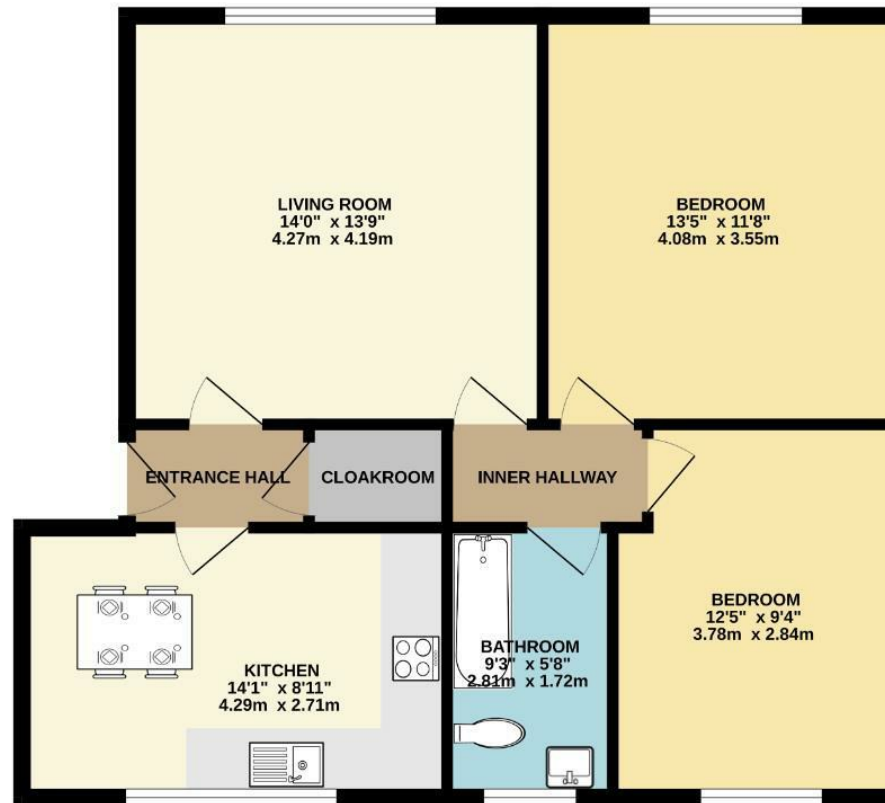
Floor Area - 717.00 sq ft

Local Authority - Manchester City Council

Council Tax - B



SECOND FLOOR
717 sq.ft. (66.6 sq.m.) approx.



TOTAL FLOOR AREA - 717 sq.ft. (66.6 sq.m.) approx.
Measurements are approximate. Not to scale. Illustrative purposes only.
Made with Metropix 62025



These particulars are believed to be accurate but they are not guaranteed and do not form a contract. Neither Jordan Fishwick nor the vendor or lessor accept any responsibility in respect of these particulars, which are not intended to be statements or representations of fact and any intending purchaser or lessee must satisfy himself by inspection or otherwise as to the correctness of each of the statements contained in these particulars. Any floorplans on this brochure are for illustrative purposes only and are not necessarily to scale.

Offices also at: Wilmslow, Macclesfield, Hale, Sale, Chorlton, Glossop, Manchester & Salford

757-759 Wilmslow Road, Didsbury Village, Manchester

0161 445 4480

didsbury@jordanfishwick.co.uk
www.jordanfishwick.co.uk